

TM-9

SMART PoC MOBILE RADIO

- Aviation Connector for Palm-mic
- Bass Stereo Speaker Design

- Built-in GPS ,Wi-Fi,Bluetooth
- Extended DB25 Interface

- High Power Speaker
- 4.0" Multi-touch Display

COMPACT LTE VEHICLE RADIO



TM-9 is a flexible and expandable PoC mobile radio. The product is flexible, the design is simple, and the communication is not limited by distance. It can be applied to various working environments required by driving, providing efficient communication, and improving the safety and cost-effectiveness of fleet management.



4.0" Multi-touch Display

Essential information is easily readable from the big size display, which also makes menu selection quick and simple.



Aviation Interface for Palm-mic

The aviation ensures ruggedized connection between the mic and the main unit, as well as optimal signal transmission.



Built-in GPS, Wi-Fi, Bluetooth

GPS module facilitates visualized fleet management. Versatile communication modules make it easier to connect accessories, while enriching its connectivity with the network.



High Power Speaker

The powerful speaker ensures audio volume and quality amid wind noise during driving. The driver's reception of voice calls is guaranteed.



Global Network Coverage

TM-9 is operable within most of the mobile networks across the world. To access the local operators' coverage, one SIM card with data package is all what it needs.



Bass Stereo Speaker Design

Bass stereo design improves voice fidelity and restoration, making the audio output as close to the natural human voice as possible.

SCENARIOS



Logistics



Transportation



Ambulance



Security



Mining

PRODUCT PARAMETERS

CONNECTION

EU Version	GSM: B2/B3/B5/B8
	WCDMA: B1/B5/B8
	TDD-LTE: B38/B40/B41
	FDD-LTE: B1/B3/B5/B7/B8/B20/B28A/B28B
US Version	GSM: B2/B3/B5/B8
	WCDMA: B2/B4/B5
	TDD-LTE: B38/B40
	FDD-LTE: B2/B3/B4/B5/B7/B8/B12/B17/B28A/B28B/B66
Wi-Fi	IEEE 802.11 a/b/g/n, 2.4G&5G
Bluetooth	BT4.0
Navigation	GPS, GLONASS

OS

OS	Android7.1
----	------------

HARDWARE

CPU	MT6739
RAM+ROM	1GB+8GB

HARDWARE

USB	Micro USB 2.0
Card Slot	Dual Nano SIM Card + TF Card
Interface	Aviation Hand Microphone Interface(Without Digital Keyboard) / External Camera(720P/1080P) / RJ-45(optional) / GPS External Antenna Interface / Main Antenna External Interface / DB25
Screen	G+F Touch Screen
Screen Size	4" OLED , 360*640RGB. MIPI11in
Camera	External Camera(Optional)
Speaker	3558 Runway Type Speaker, 5W
External Speaker	Support
Hand Microphone	Support
Dimension(HxWxD)	195.1x67.3x88.6mm
Weight	≈ 500g

CERTIFICATION

Ingress Protection	IP54
Certification	CE/FCC/ROHS

STANDARD ACCESSORIES



Charging Cable Main Antenna GPS Antenna Hand Microphone



Bracket Holder Screwdriver Touchscreen Pen

OPTIONAL ACCESSORIES



External Speaker External Camera Foot-on Microphone Desktop Microphone



Inrico Technologies Co.,Ltd.

Tel.: +86-0755- 83273589 Email: sales@inricosolutions.com www.inricosolutions.com
 A1703, Shenzhen National Engineering Laboratory Building, No. 20 Gaoxin South 7th Road , High-tech Community, Yuehai Street, Nanshan District, Shenzhen, Guangdong.

Inrico is dedicated to providing professional communication solutions to global users with quality & efficiency and enrich global wireless communications ecosystem. For more information about our products and solutions, please contact us or visit www.inricosolutions.com.

Inrico and stylized Inrico logo are trademarks of Inrico Technologies Co., Ltd. All rights reserved.

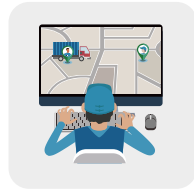


iConvNet™ CONVERGENCY PLATFORM

iConvNet™ convergency platform is an integrated communication and dispatching system with audio and video communications as the core services, which integrates map positioning, multimedia data, emergency alarm, patrol & inspection, event reporting, task management and other auxiliary services.



Dispatch Center



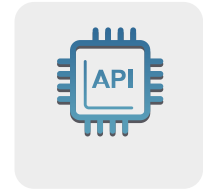
Management Platform



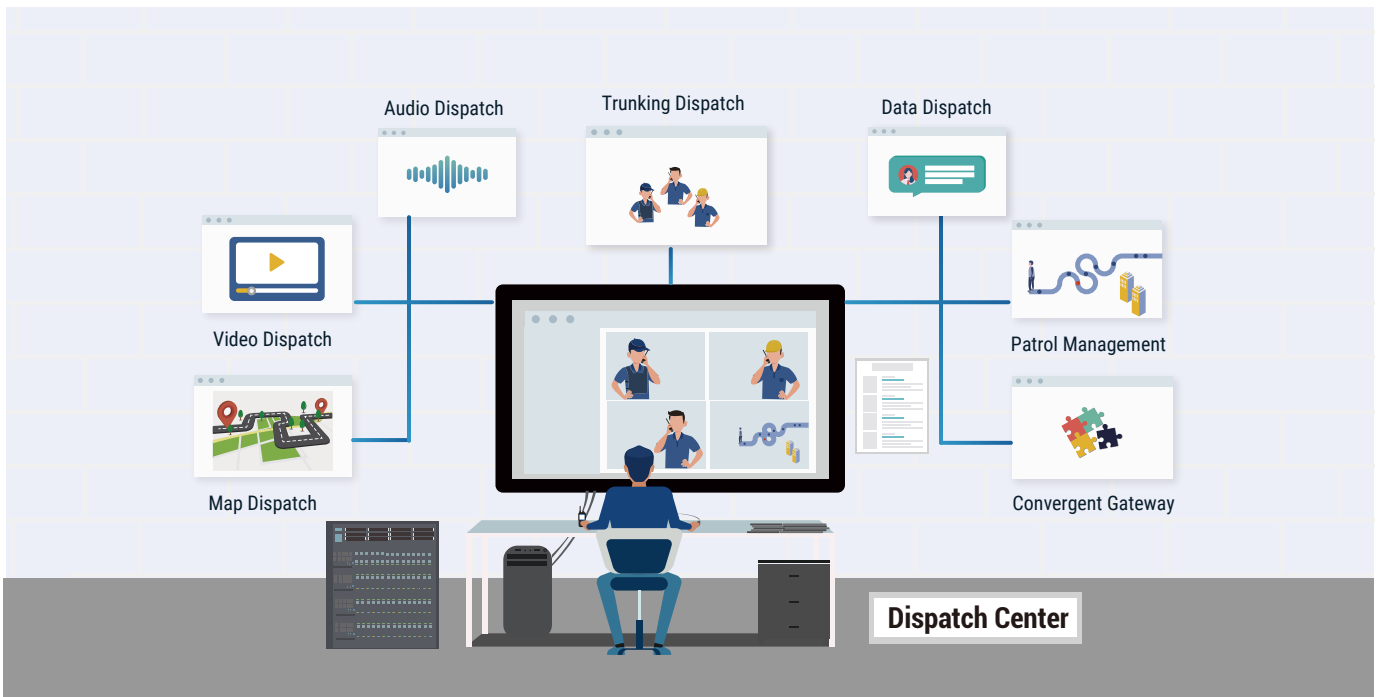
APP



Terminals



Third-Party API



Functions	Details	Functions	Details	Functions	Details
Video Dispatch	Two-way Video	Map Dispatch	Geo-fencing	Convergent Gateway	DMR Trunking Gateway/ IP Connection
	Video Upload		Device Positioning		DMR DMO Gateway
	Video Surveillance		Circle to Call		PDT Softswitch Gateway
	Split-screen Video (16 channels)		Route Playback, Distance Measurement		PSTN Gateway
	Video Distribution		Indoor Localization		Video Gateway
	Video Recording				
Trunking Dispatch	Private Call/ Group Call/ All Call/ Temporary Group Call	Patrol Management	Patrol Point/ Patrol Area	Expansion Application	AES256 Encryption
	Authority Management(Kill/ Stun)		Patrol Schedule		Event Report
	User Priority		Patrol Statistics		Task Dispatch
	Call History	Data Dispatch	Broadcast/ Group/ User Message		Call/ Video Conference
	Multi-Group Monitor		Text/ Image/ Video/ Voice		IoT
	Voice Recording for Dispatch/ Single Device	Audio Dispatch	Full Duplex Call		AI Intelligent Analysis
	SOS		Interrupt/ Override/ Monitor/ Call Pickup/ Call Transfer/ Call Queue		Accessories Management
		Narrowband Individual Call/ All call	Assets Management		

(Remark: Green color means the function is on developing)