

## General Specifications

The Channel Capacity	64
Emission Current	<15A(45W)
Frequency Range	UHF:400-470MHz; 350-400MHz VHF:136-174MHz
Channel Spacing	12.5kHz / 20kHz / 25kHz
Dimension (HxWxD)	44 x 482.6 x 450mm
Weight	11.2kg
Working Temperature	- 30°C ~ +60°C
Working Voltage	DC13.8V±20% Option: AC 100-250V 50/60Hz
Storage Temperature	- 40°C ~ +85°C
Static Class	IEC 61000-4-2 (Level 4)
Working mode	Digital/Analog/Mixed mode

## Receiving Specifications

Frequency Stability	± 0.5 ppm
Analog Sensitivity	<0.22μ V (12dB SINAD)
Digital Sensitivity	<0.30μ V (5%BER)
Receiver Intermodulation	TIA603: ≥70dB ETSI: ≥65dB
Adjacent Channel Selectivity	TIA603: 60dB @ 12.5 kHz / 75dB @ 20/25 kHz
	ETSI: 60dB @ 12.5 kHz / 75dB @ 20/25 kHz
Spurious Response	TIA603: 70dB ETSI: 70dB
Conduction Stray	- 57dBm@ < 1GHz, - 47dBm @ > 1GHz
Blocking	TIA603: 90dB ETSI: 84dB
Received Audio Distortion	< 3%
Received Audio Response	+1dB, - 3dB

## Launch Specifications

Frequency Stability	± 0.5 ppm
RF Output Power	5-50W (Continuous adjustable)
Transmission SNR	≥40dB@12.5kHz, ≥43dB@20kHz, ≥45dB@25kHz
Conduction Stray	-36dBm@<1GHz, -30dBm@>1GHz
Adjacent Power	-60dB@12.5kHz, -70dB@20kHz/25kHz
Modulation Method	11K0F3E@12.5kHz, 14K0F3E@20kHz, 16K0F3E@25kHz
Modulation Frequency Offset Limit	±2.5kHz@12.5kHz, ±4.0kHz@20kHz, ±5.0kHz@25kHz
Audio Response	+1dB, - 3dB
Audio Distortion	< 3%
Vocoder	AMBE++/NVOC
4FSK Digital Modulation	Data: 7K60F1D&7K60FXD, Voice: 7K60F1E&7K60FXE, Voice and data: 7K60FXW



## DR6600 DR6600 Professional DMR Repeater

### DR6600 Professional DMR Repeater

DR6600, a professional DMR repeater conforms to the standard DMR protocol, and is well compatible with other DMR terminals, supporting digital, analog, and dynamic hybrid modes. In mixed mode, it has a digital/analog adaptive function, which can automatically identify digital/analog signal intelligent transfer. It is a perfect choice for building a professional digital wireless communication system, which supports IP interconnection and networking to achieve communication coverage of a large area and wide range.



## The Product Features

★ **Compatible with analog and digital, intelligent switching**

Supports digital, analog and dynamic hybrid mode channels. It has an adaptive function and can automatically identify digital/analog signal with intelligent transit in mixed mode.

★ **Leading TDMA dual-slot technology**

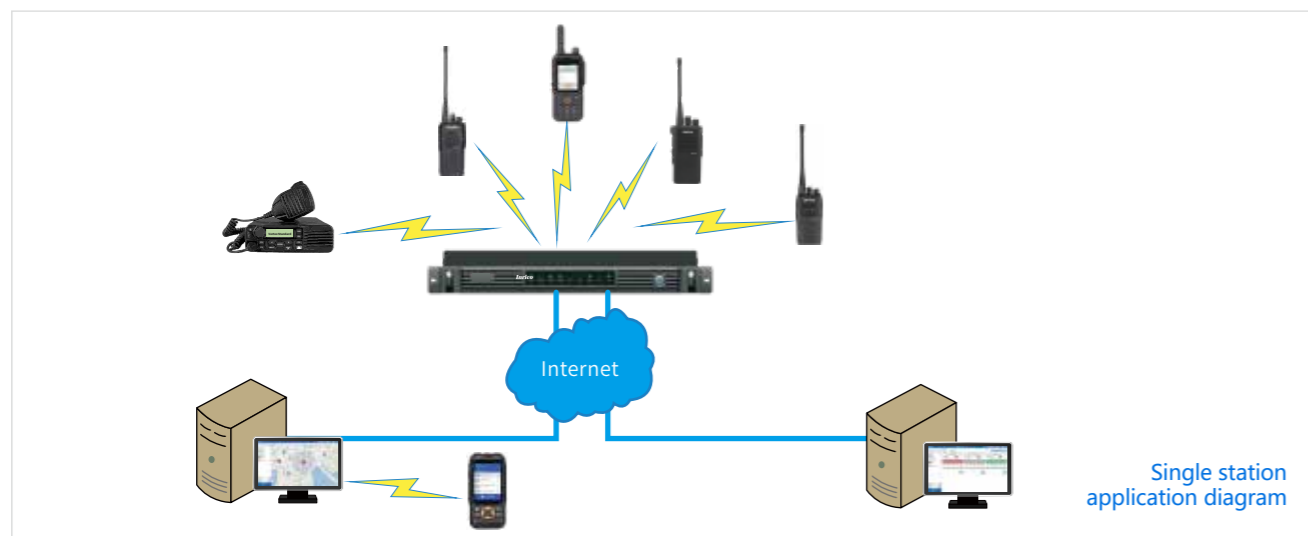
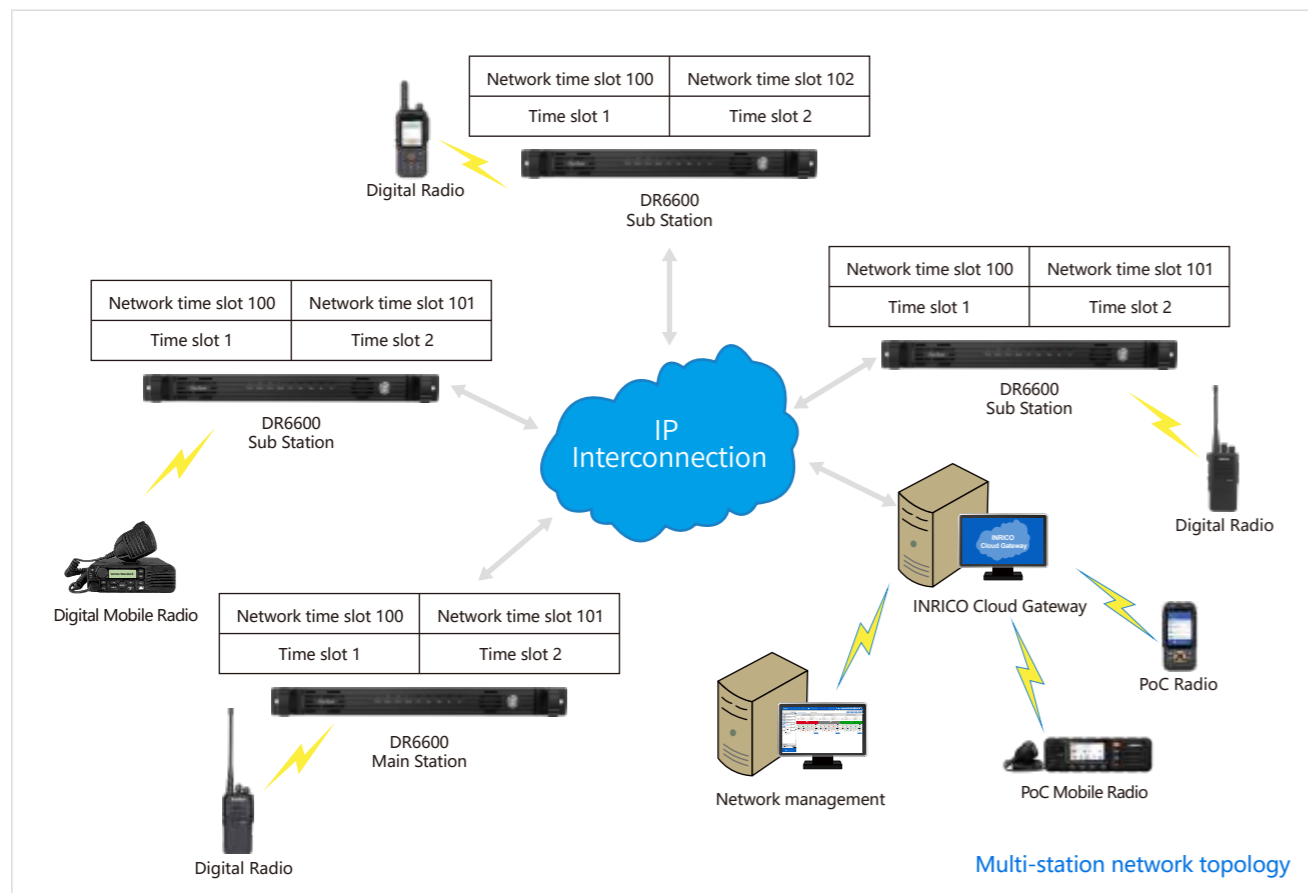
Based on the leading Time Division Multiple Address (TDMA) technology, multiplies the spectrum utilization and user capacity, digital mode dual-slot voice transfer, can provide two channels of communication, reduce the cost of hardware equipment.

★ **IP interconnection mode \*(optional)**

It supports the interconnection of repeater through IP port, which can realize voice and data communication in large areas and a wide range.

★ **Powerful attachment extension function**

With 26-PIN secondary development interface, support RJ45 Ethernet secondary development interface, support the third party through AIS (SIP) protocol to realize their own scheduling system.



## Product Features

★ **Support perfect forwarding of voice and data services**

With a single call, group call, full call & short message, call prompt, stun & kill, emergency SOS, emergency call, and other voice and data services forwarding functions.

★ **Remote diagnosis**

Supports remote (connected to the Internet by IP port) monitoring, diagnosis and control of the status of the repeater, so that the system communication and maintenance efficiency is improved.

★ **Excellent heat dissipation performance**

The design of the temperature control cooling fan can ensure the stable operation of the equipment under 100% full power condition for a long time.

★ **Convenient management software**

Through the management software, you can remote control and diagnose the repeater, and can realize lots of dispatching functions.

★ **Analog-digital hybrid mode**

It supports the hybrid mode of digital channel and analog channel to realize the efficient sharing of digital and analog equipment.

★ **Read/write frequency password protection**

The repeater support read/write frequency password protection to prevent illegal users from modifying parameter information.

★ **Analog/digital telephone interconnection (via DTMF signaling)**

The repeater can be connected to the traditional telephone system through connecting the local PSTN gateway or the remote PSTN gateway via IP interconnection, so as to realize the communication between the terminal connected to the network of the turntable and the telephone user.



### Super heat dissipation performance

Temperature control cooling fan design. It can ensure the stable operation of the equipment under 100% full power condition for a long time.